

THRIVING LIVES FOR SERVICE CHILDREN

# The Seven Principles of Effective School Support

SCIP ALLIANCE VIRTUAL TRAINING CONFERENCE  
FOR SCHOOLS IN OXFORD & CENTRAL ENGLAND

TUESDAY 8TH JUNE 3.45PM – 4.45PM

WEDNESDAY 23RD JUNE 3.45PM – 5.45PM

Service Children's Progression



## CONFERENCE AIMS

To empower schools to reflect on and develop their support for children in Armed Forces families through the SCiP Alliance Thriving Lives Toolkit

## LEARNING OUTCOMES

After these training conferences you will:

- Feel better informed about the challenges and opportunities for Service children
- Feel equipped to use the Thriving Lives Toolkit and confident to put it into practice
- Know who you can contact to help develop your work with Service children



# WELCOME

It is my great pleasure to welcome you to the SCiP Alliance Virtual Training Conference for Schools in Oxford and Central England.

Professionals throughout the UK and overseas tell us of the value they place on having the opportunity to learn from and share with each other and of the need for evidence-based, practical resources to help them support Service children. This is one of a series of conferences across the UK that will do just that.

Underpinned by rigorous research and thoroughly tested in diverse school settings, the Thriving Lives Toolkit you will look at today provides a framework of seven principles to help you reflect on and enhance your practice, and a three-tier support suite of animations, self-directed training and case studies, which you can find on our **website**.

Run by the SCiP Alliance Oxford and Central England Hub, this conference will give you the opportunity to explore the Thriving Lives Toolkit, to connect with other schools and to hear from partners keen to help.

Thank you for all you do to help Service children thrive. I look forward to hearing how the toolkit has helped you and what more we can do. Get in touch through our website or start a conversation on Twitter - @scipalliance.



**Phil Dent**

Director SCiP Alliance



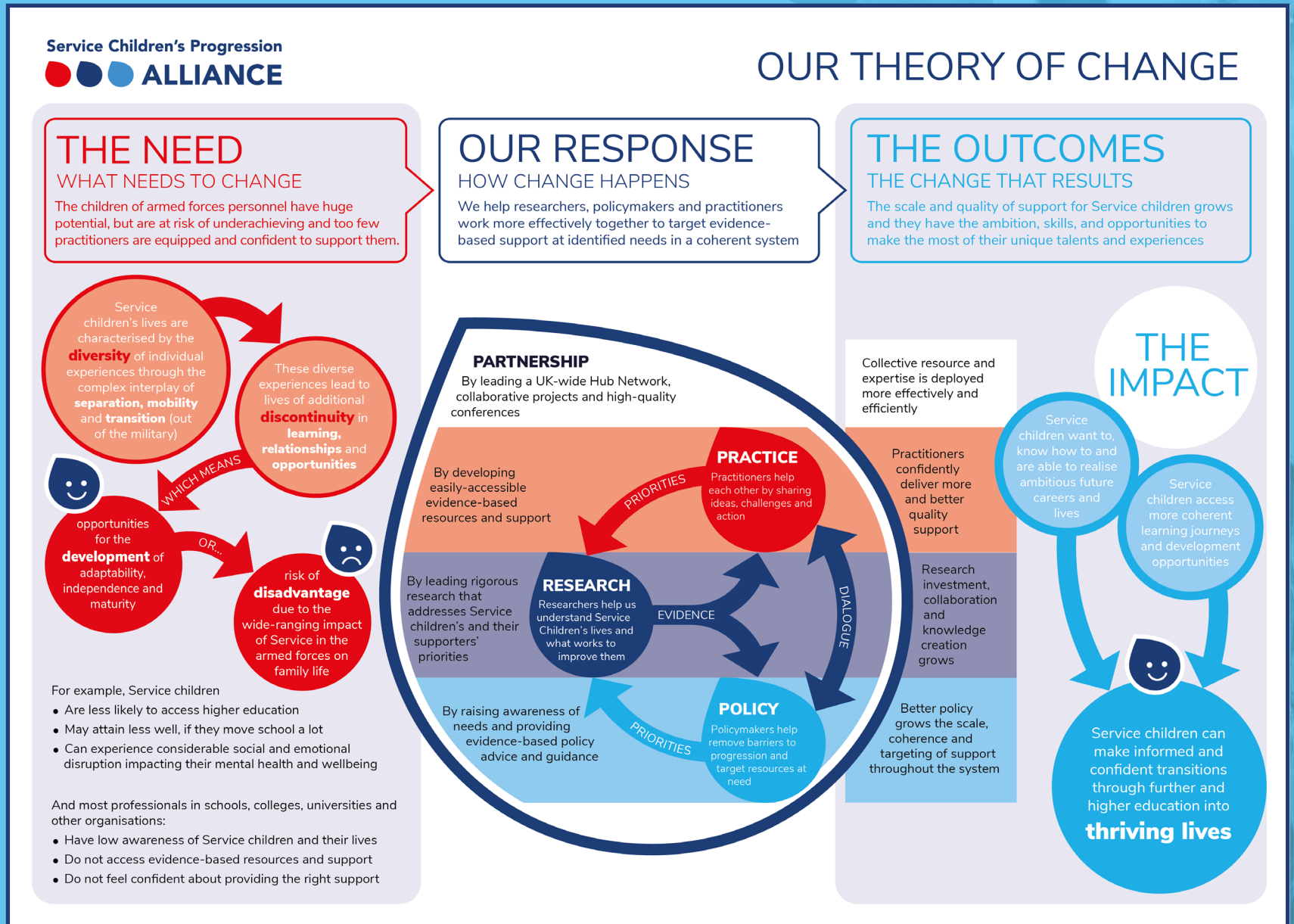
# CONTENTS

PAGE	3	WELCOME
	4	SCIP ALLIANCE THEORY OF CHANGE
	6	AGENDA
	7	THRIVING LIVES TOOLKIT
	11	PRINCIPLE 1 - OUR APPROACH IS CLEAR
	14	PRINCIPLE 2 - WELLBEING IS SUPPORTED
	17	PRINCIPLE 3 - ACHIEVEMENT IS MAXIMISED
	20	PRINCIPLE 4 - TRANSITION IS EFFECTIVE
	23	PRINCIPLE 5 - CHILDREN ARE HEARD
	26	PRINCIPLE 6 - PARENTS ARE ENGAGED
	29	PRINCIPLE 7 - STAFF ARE WELL-INFORMED
	32	THE THRIVING LIVES TRAINING MODULES
	33	EVALUATION
	34	CONFERENCE EVALUATION
	35	ACRONYMS QUIZ
	37	SCIP ALLIANCE HUB NETWORK
	38	THANKS



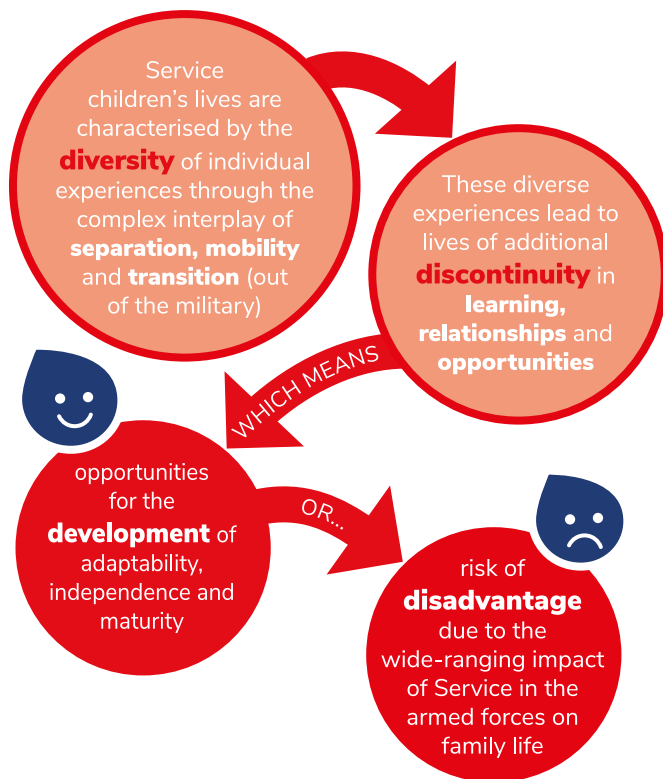
# SCIP ALLIANCE THEORY OF CHANGE

The SCiP Alliance Theory of Change tells the story of why we do what we do: both the evidence for action and the impact we want for all Service children.



## THE NEED

Like all children, the children of serving and ex-Armed Forces personnel are unique and have huge potential. But their lives can have complex additional challenges. Evidence suggests this can have both positive and negative effects for Service children.



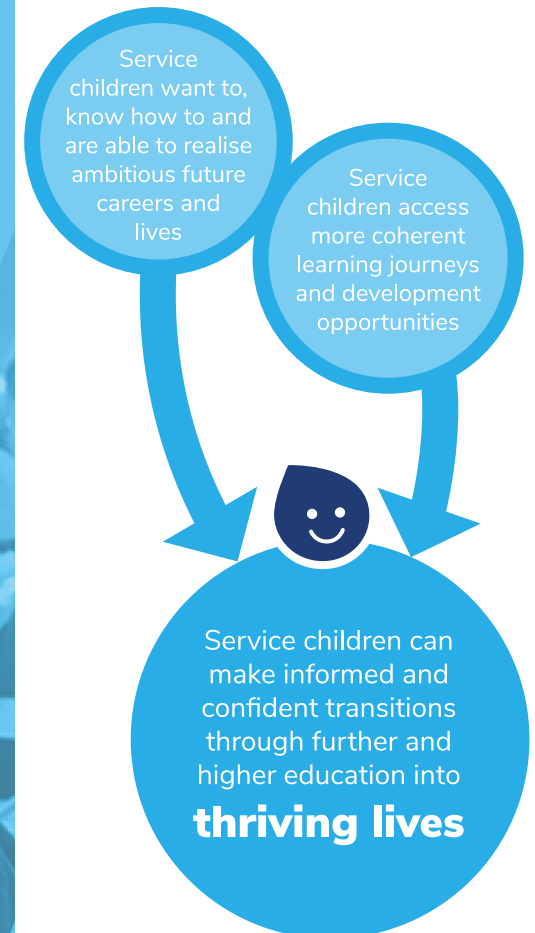
## THE SCIP ALLIANCE RESPONSE

Our Stakeholder Research told us people want to be better connected: with each other, with evidence and with support. So a UK-wide Hub network connects practitioners, researchers, policy-makers and funders. These conferences will support you in using our evidence-based resources and create connections in your local area, helping schools to help Service children.



## THE OUTCOMES

We want to see the scale and quality of support for Service children grow. Better collaboration, more research, and evidence-based practice and policy will lead to more opportunities and a more coherent learning journey for Service children.



# AGENDA

## TUESDAY 8TH JUNE 2021 (15:45-16:45)

15:45-15:50	Welcome (Kim James, Oxfordshire County Council)
15:50- 16:05	Understanding Service children's lives and how the SCiP Alliance helps (Phil Dent, SCiP Alliance Director)
16:05-16:30	How can schools use the Thriving Lives toolkit, (Kath Lawrence, SCiP Alliance Head of Operations)
16:30-16:45	Q&A Panel
Homework:	delegates to explore their chosen principle <a href="http://www.scipalliance.org">www.scipalliance.org</a>

## WEDNESDAY 23RD JUNE 2021 (15:45-17:45)

15:45-15:50	Intro from Study Higher
15:50- 16:05	Welcome (Andy Heyes, Oxfordshire County Council)
16:05-16:20	How schools can use the toolkit and who can help schools help Service children thrive? (Kath Lawrence, SCiP Alliance Head of Operations)
16:20-16:35	Participant discussion on using the toolkit
16:35-16:40	Break
16:40-16:50	Experiences of a Service child (Jodie, graduate ambassador at Oxford Brookes University)
16:50-17:05	The context for Service children in schools (Steph Fawdry, Headteacher RAF Benson Primary School and Chair of SCISS)
17:05-17:25	Supporting Service Children with SEND (Ed Harris, Senior Education Officer, MOD AFFS)
17:25-17:45	Q&A Panel



helping schools support Service children

# Thriving Lives toolkit

# Thrivng Lives Toolkit

The Service Children’s Progression Alliance conducted a large-scale UK-wide consultation which told us that professionals supporting Service children want to be better connected: with each other, with evidence and with support. The Thrivng Lives Toolkit responds directly to this need.

Independent research carried out by the International Centre for Guidance Studies (iCeGS) at the University of Derby comprised:

- Literature review
- Survey in which 479 schools participated
- In-depth, multi-case study investigation with Service children, senior leaders, teachers and support staff in schools with at least a ‘good’ Ofsted rating that are known for their Service child support
- The schools were specifically chosen to provide a balance of primary and secondary, proportions of Service children (from very low to high), while serving all three Services between them.

The research identified seven principles for effective practice and a framework to help schools undertake evidence-based reflection and identify improvement priorities. Research does not identify any principle to be of more importance than another. It is important to consider all seven.

## Partnership

The SCiP Alliance is a partnership of people supporting Service children’s education and success. Partnership is fundamental to the Alliance’s existence, but it is also a commitment to a way of working. Running through all seven principles for effective practice is the thread of meaningful and open collaboration with all those who have a stake in supporting Service children to thrive.

## Asset-based

The SCiP Alliance takes an asset-based approach. It means we start with the strengths and focus on how to build on them. It does not mean avoiding problems or ignoring issues, instead it challenges us to focus on solutions and to never problematise children themselves. Like all children, Service children have huge potential, and their experiences provide wonderful opportunities to thrive.

## Evidence-led

The SCiP Alliance starts with the best available evidence. The robust research underpinning the Thrivng Lives Toolkit provides greater confidence that what we do can be effective. We can never know everything we need to know, but, combined with well-informed professional judgement and an unrelenting focus on the child, a sound evidence base helps provide a foundation on which Service children can thrive.

## How to assess your practice

Emerging practice	Developing practice	Embedding practice
Schools with emerging practice will be actively reflecting on their activity and may be implementing actions to enhance their support, but to a small extent	Schools with developing practice will be addressing this principle to a good extent, but this may be partial or yet to be enhanced through regular monitoring and evaluation	Schools with embedding practice will fully address this principle with well-established work that is routinely monitored and evaluated and showing evidence of impact



## Advice from Other Schools

This toolkit has been developed by the SCiP Alliance in collaboration with a number of Uni Connect partnerships. The initial draft was piloted in a variety of schools in 2020. Evaluation officers in six Uni Connect partnerships, led by Higher Horizons at Keele University, analysed feedback from schools and provided recommendations which have enhanced the content and format.

Schools in the pilot ranged from those with a high proportion of Service children to those with only a few. Pilot schools served families from the Army, RAF and the Royal Navy in many different locations. All participants recommended that other schools educating Service children use this tool to consider their support for their Service children.

The pilot confirmed that the tool is highly practical and will support you in determining not only overall strategy, but specific actions. Schools suggest

that you schedule time for it on a regular basis, using it as the basis of diagnostic and planning activities.

Many schools highlighted its usefulness in developing governance documents and strategies.

Schools suggest that you use the toolkit not only to record your own thoughts, but as a tool for communication and collaboration within the school and in conversations with others, such as local authorities or inspection teams.

Schools identified the Toolkit's potential to provide a mechanism for schools to share practice, to develop shared activity or to collaborate on funding bids.



The 7 principles of effective support

Principle

Vision

<b>1</b>	<b>Our approach is clear</b>	Leaders' understanding and approach ensure resources and policies improve Service children's outcomes.
<b>2</b>	<b>Wellbeing is supported</b>	Tailored pastoral provision supports Service children's mental health and wellbeing.
<b>3</b>	<b>Achievement is maximised</b>	Teaching, assessment and support ensure the continuity of Service children's learning and progression.
<b>4</b>	<b>Transition is effective</b>	Systems and support ensure seamless transitions for Service children arriving at and leaving school.
<b>5</b>	<b>Children are heard</b>	Service children's diverse voices are heard and inform the support they receive.
<b>6</b>	<b>Parents are engaged</b>	Strong home-school partnerships help Service families feel valued as part of the school community.
<b>7</b>	<b>Staff are well-informed</b>	Supportive training and networks ensure all staff understand and support each Service child.

## Evidence suggests:

- Clear policies and strong cultural awareness of the life of a Service child at a school's strategic level are key to effective support
- A central aspect of school transparency and support is the targeted deployment of resources, including dedicated funding where available
- Monitoring Service children's outcomes and the impact of spend and activity can improve the effectiveness of support
- There are 6 key questions for schools to consider



## What this might look like:

Research identified that practice supporting this principle may include:

- Having a clear strategy for the targeted deployment of dedicated funding
- Publishing a dedicated strategy for supporting Service children, for example through the school website
- Evaluating the impact of a dedicated strategy, changing it when it is deemed not to be presenting good value for money
- Monitoring and reporting on outcomes for Service children
- Governing body minutes evidencing challenge around Service children's academic progress, achievement and wellbeing
- Strategy and leadership is informed by Service children's voices
- Named staff contact

## Examples from practice:

**Dedicated funding is "used to buy out some of my time so I am free to do mentoring and some of the money is used to liaise with the Service community's counselling organisations."**

(Service children lead, secondary school)

**"Appointing a Forces Families Liaison Officer has really benefitted our Service children and families, providing a link between school and home."** (Senior leader, primary school)

**"Time for staff to be involved with local cluster group for Service families; transport costs for Service Children to participate in activities organised by the cluster; half-termly get-togethers with the Service children at our school and the neighbouring junior school."** (Senior leader, primary school with 2 pupils on roll)

Emerging practice	Developing practice	Embedding practice
Schools with emerging practice will be actively reflecting on their activity and may be implementing actions to enhance their support, but to a small extent	Schools with developing practice will be addressing this principle to a good extent, but this may be partial or yet to be enhanced through regular monitoring and evaluation	Schools with embedding practice will fully address this principle with well-established work that is routinely monitored and evaluated and showing evidence of impact

# 1

## Our approach is clear

Leaders' understanding and approach ensure resources and policies improve Service children's outcomes.

REFLECT	EVIDENCE	SELF-ASSESSMENT			ACTION	DATE
Reflect with stakeholders on these key questions	Identify current practice that demonstrates where you are now	Assess your current practice			Identify actions to enhance your support	Agree a deadline for your actions
		Emerging	Developing	Embedding		
<p><b>1.1</b> - To what extent are all those involved in leadership, governance and Service child support aware of funding and other resources available to support Service children?</p>						dd/mm/yy
<p><b>1.2</b> - To what extent do you monitor how dedicated funding is spent?</p>						
<p><b>1.3</b> - To what extent is support informed by evidence and monitored for effectiveness?</p>						

# 1

## Our approach is clear

Leaders' understanding and approach ensure resources and policies improve Service children's outcomes.

Thriving  
Lives  
toolkit

REFLECT	EVIDENCE	SELF-ASSESSMENT			ACTION	DATE
Reflect with stakeholders on these key questions	Identify current practice that demonstrates where you are now	Assess your current practice			Identify actions to enhance your support	Agree a deadline for your actions
		Emerging	Developing	Embedding		dd/mm/yy
<p><b>1.4</b> - To what extent do Service family voices and Armed Forces representation inform those responsible for leadership, governance and Service child support?</p>						
<p><b>1.5</b> - To what extent do those responsible for school governance ensure Service children's outcomes are monitored and appropriate support is delivered?</p>						
<p><b>1.6</b> - To what extent do your admissions policies take account of Service families' frequent, mid-term and short notice moves?</p>						

**Evidence suggests:**

- Provision of pastoral support for Service children is a priority
- A school environment attuned to the experiences of Service children can promote positive development
- Service children may need extra support during periods of transition and discontinuity
- There are 5 key questions for schools to consider

**What this might look like:****Research identified that practice supporting this principle may include:**

- Opportunities for Service children to explore their experiences and feelings with other Service children in clubs such as those facilitated by the MKC Heroes network
- Engagement with parents to be aware of upcoming deployments
- Supporting a child to research and map a deployed or weekend parent's location
- Exploiting any opportunities in the curriculum to support children and their peers to understand where a deployed parent is stationed
- Embedding understanding of Armed Forces in the curriculum
- Ensuring all staff understand the range of Service children's potential experiences and emotions during the different stages of deployment and separation
- Organising resources for families to maintain connections during periods of separation

**Examples from practice:**

**"We part fund a Family Liaison Officer, part of whose role is to support families in the home during deployment or at times of any stress."**

(Senior leader, primary school)

**"Our ELSA ... provides an after school 'Forces Fun Club'. They also meet weekly with any child who has a parent away on deployment and supports with letter writing."**

(Senior leader, primary school)

**"Every child whose parent goes away gets a 'knitted doll' of their parent and the parent has a small knitted 'child'."**

(Senior leader, primary school)

**Emerging practice**

Schools with emerging practice will be actively reflecting on their activity and may be implementing actions to enhance their support, but to a small extent

**Developing practice**

Schools with developing practice will be addressing this principle to a good extent, but this may be partial or yet to be enhanced through regular monitoring and evaluation

**Embedding practice**

Schools with embedding practice will fully address this principle with well-established work that is routinely monitored and evaluated and showing evidence of impact

REFLECT	EVIDENCE	SELF-ASSESSMENT			ACTION	DATE
Reflect with stakeholders on these key questions	Identify current practice that demonstrates where you are now	Assess your current practice			Identify actions to enhance your support	Agree a deadline for your actions
		Emerging	Developing	Embedding		dd/mm/yy
<p><b>2.1</b> - To what extent do you create opportunities for Service children to meet, and explore experiences together?</p>						
<p><b>2.2</b> - To what extent is your pastoral support informed by Service children's voices?</p>						
<p><b>2.3</b> - To what extent do you have mechanisms to provide tailored support when Service children need it while ensuring that they are not singled out unnecessarily?</p>						

REFLECT	EVIDENCE	SELF-ASSESSMENT			ACTION	DATE
Reflect with stakeholders on these key questions	Identify current practice that demonstrates where you are now	Assess your current practice			Identify actions to enhance your support	Agree a deadline for your actions
		Emerging	Developing	Embedding		dd/mm/yy
<p><b>2.4</b> - To what extent does pastoral support take account of points of stress including deployment/weekending, school moves and caring responsibilities?</p>						
<p><b>2.5</b> - To what extent do you nurture Service children's identities, and help them feel understood?</p>						



**Evidence suggests:**

- A commitment to support Service children to maximise personal levels of achievement is a priority
- Transition impacts on attainment in a range of ways, including the disruption of moving, non-alignment of subjects and exam boards, missing curriculum and repeated curriculum
- The emotional impact and stress that deployment and separation have on Service children can affect academic attainment
- There are 6 key questions for schools to consider

**What this might look like:****Research identified that practice supporting this principle may include:**

- Assessment of new arrivals, taking into account the need for a sense of security before undertaking assessments
- Ongoing assessment and monitoring
- Ensuring that a strong focus is placed on ensuring that a Service child's emotional health and wellbeing is supported as a precursor to academic achievement
- One-to-one support or catch-up sessions
- Ensuring Service children are offered additional careers support and exposure to alternative trajectories
- Support for developing and showcasing strengths
- Understanding the national picture on Service children's achievement and what it means for your approach
- Catch-up support to address curriculum gaps
- Support to access extra curricular opportunities

**Examples from practice:**

**“Head of inclusion allows a setting period of less than a month before meeting with parents and pupils and taking information from staff to discuss any gaps. Catch up in the form of alternative homework.”**

(Senior leader, middle school)

**“We employ extra staff to help fill these gaps with 1:1 or small group catch-up sessions.”**

(Senior leader, primary school)

**“We’ll try and celebrate a topic that a new student has covered that we don’t do, so we’ll ask them to talk to the class about that theme.”**

(Teacher, primary school)

Emerging practice	Developing practice	Embedding practice
Schools with emerging practice will be actively reflecting on their activity and may be implementing actions to enhance their support, but to a small extent	Schools with developing practice will be addressing this principle to a good extent, but this may be partial or yet to be enhanced through regular monitoring and evaluation	Schools with embedding practice will fully address this principle with well-established work that is routinely monitored and evaluated and showing evidence of impact

## 3

## Achievement is maximised

Teaching, assessment and support ensure the continuity of Service children's learning and progression.

Thriving  
Lives  
toolkit

REFLECT	EVIDENCE	SELF-ASSESSMENT			ACTION	DATE
Reflect with stakeholders on these key questions	Identify current practice that demonstrates where you are now	Assess your current practice			Identify actions to enhance your support	Agree a deadline for your actions
		Emerging	Developing	Embedding		dd/mm/yy
<p><b>3.1</b> - To what extent do you assess on entry and monitor Service children's achievement, learning gaps and preferences, support needs and interests and skills?</p>						
<p><b>3.2</b> - To what extent do you address gaps and mitigate curriculum and qualification discontinuity?</p>						
<p><b>3.3</b> - To what extent do you track and regularly review Service children's outcomes and progress, and tailor support in response?</p>						

## 3

## Achievement is maximised

Teaching, assessment and support ensure the continuity of Service children's learning and progression.

Thriving  
Lives  
toolkit

REFLECT	EVIDENCE	SELF-ASSESSMENT			ACTION	DATE
Reflect with stakeholders on these key questions	Identify current practice that demonstrates where you are now	Assess your current practice			Identify actions to enhance your support	Agree a deadline for your actions
		Emerging	Developing	Embedding		
3.4 - To what extent do you address Service children's additional learning support needs?						dd/mm/yy
3.5 - To what extent do you celebrate prior learning and help Service children make the most of their strengths?						
3.6 - To what extent do you provide tailored careers and decision-making support for Service children?						

**Evidence suggests:**

- A robust and supportive transition procedure for pupils both entering and leaving schools is a priority
- Not only may Service children relocate more than non-Service children, but many move in the middle of the school year
- Service children require bespoke pastoral support for repeated transition
- Proactive and planned support can be particularly important for children with specific educational needs
- There are 6 key questions for schools to consider

**What this might look like:****Research identified that practice supporting this principle may include:**

- Identifying Service children on entry through admission forms
- Identifying current Service children through requests to parents for updated information
- A standing staff meeting item about Service children and any those joining or leaving the school
- Liaising with Service children's previous or next school
- Processes to ensure the first day goes particularly smoothly and a Service child feels welcomed, such as a buddy system (for both children and parents) and clear information for both child and parents
- Schools in England and Wales complete specific fields in the Common Transfer File (CTF)
- A clear, regularly reviewed mobility policy
- Leaving and arriving rituals, such as songs in assembly or special booklets of memories to keep
- Arrivals and leavers display boards with photographs and affirming messages

**Examples from practice:**

**"Our ELSA will visit pupils in the current setting where possible and have conversations with the current school to get an understanding of the child."**

(Senior leader, primary school)

**"When we don't get paperwork, we phone up the previous school ... If there's an issue with a child, we phone their next school."**

(Senior leader, primary school)

**"The buddy system helps. It makes you have an automatic friend."**

(Service child, secondary school)

**Emerging practice**

Schools with emerging practice will be actively reflecting on their activity and may be implementing actions to enhance their support, but to a small extent

**Developing practice**

Schools with developing practice will be addressing this principle to a good extent, but this may be partial or yet to be enhanced through regular monitoring and evaluation

**Embedding practice**

Schools with embedding practice will fully address this principle with well-established work that is routinely monitored and evaluated and showing evidence of impact

REFLECT	EVIDENCE	SELF-ASSESSMENT			ACTION	DATE
Reflect with stakeholders on these key questions	Identify current practice that demonstrates where you are now	Assess your current practice			Identify actions to enhance your support	Agree a deadline for your actions
		Emerging	Developing	Embedding		
<p><b>4.1</b> - To what extent does your school identify Service children?</p>						dd/mm/yy
<p><b>4.2</b> - To what extent do you work with outgoing and incoming families through the long transition process?</p>						
<p><b>4.3</b> - To what extent do you welcome families, both before and after their moves, and ensure a positive experience from the first day?</p>						

REFLECT	EVIDENCE	SELF-ASSESSMENT			ACTION	DATE
Reflect with stakeholders on these key questions	Identify current practice that demonstrates where you are now	Assess your current practice			Identify actions to enhance your support	Agree a deadline for your actions
		Emerging	Developing	Embedding		dd/mm/yy
<p><b>4.4</b> - To what extent do you work with a Service children's previous or future schools to transfer records and find out about learning, wellbeing, achievements, interests, skills and their family context?</p>						
<p><b>4.5</b> - To what extent do you minimise discontinuity in additional support, for example by minimising re-assessment of needs?</p>						
<p><b>4.6</b> - To what extent do you help Service children build new and maintain existing relationships?</p>						

**Evidence suggests:**

- It is vital that Service children are heard and that support is consistently improved in the light of the learning
- Service children benefit from being actively involved in developing support
- Failure to listen can result in a sense of isolation
- There are 5 key questions for schools to consider

**What this might look like:****Research identified that practice supporting this principle may include:**

- Specific arrangements for Service child representation on school council or in ambassador or young governor schemes
- Service child involvement with local Armed Forces community forums and groups
- Facilitating sharing of Service child experiences through arts such as drama, picture books and poster displays
- Mechanisms for the school to capture views from members of Service child support groups
- Enabling participation in conferences and forums for Service children run by LAs, Armed Forces charities and universities
- Using surveys to gather feedback from families about induction procedures, concerns and school processes
- Ensuring Service children feel heard by documenting and celebrating how their views inform change

**Examples from practice:**

**“There are two [school ambassadors] in each class and one of those is always a Service child.”**

(Teacher, primary school)

**“We created arts sessions based on a day in the life of a Service child, role models and place. We then developed focus groups based on the subjects that had come out of these areas of discussion.”**

(Stories Outside The Wire primary project lead)

**“We celebrate and recognise the immense feelings of pride that children feel about their parents.”**

(SENCO, junior school)

Emerging practice	Developing practice	Embedding practice
Schools with emerging practice will be actively reflecting on their activity and may be implementing actions to enhance their support, but to a small extent	Schools with developing practice will be addressing this principle to a good extent, but this may be partial or yet to be enhanced through regular monitoring and evaluation	Schools with embedding practice will fully address this principle with well-established work that is routinely monitored and evaluated and showing evidence of impact

REFLECT	EVIDENCE	SELF-ASSESSMENT			ACTION	DATE
Reflect with stakeholders on these key questions	Identify current practice that demonstrates where you are now	Assess your current practice			Identify actions to enhance your support	Agree a deadline for your actions
		Emerging	Developing	Embedding		dd/mm/yy
<p><b>5.1</b> - To what extent are Service children represented in school and other forums?</p>						
<p><b>5.2</b> - To what extent do Service children's voices inform your strategies, approach and actions throughout the school?</p>						
<p><b>5.3</b> - To what extent do Service children feel heard and understood?</p>						



REFLECT	EVIDENCE	SELF-ASSESSMENT			ACTION	DATE
Reflect with stakeholders on these key questions	Identify current practice that demonstrates where you are now	Assess your current practice			Identify actions to enhance your support	Agree a deadline for your actions
		Emerging	Developing	Embedding		dd/mm/yy
<p>5.4 - To what extent do you act on feedback and ideas from Service children?</p>						
<p>5.5 - To what extent do you monitor and communicate your actions in response to listening to Service children?</p>						

**Evidence suggests:**

- A commitment to work effectively with Service families is a priority
- Close relationships with parents enable a school to understand the family situation and upcoming deployment, separation or moves
- Empathy, communication and collaboration with families are required in order to foster confidence in school provision
- There are 5 key questions for schools to consider

**What this might look like:**

Research identified that practice supporting this principle may include:

- Workshops for parents
- Support groups for Service families
- Identification and support for parents' emotional health and wellbeing
- Virtual communication with the 'away-from-home' parent
- Employment of an Armed Forces family liaison officer
- Identifying and supporting young carers in Armed Forces families
- Supporting families with consistent behavioural strategies
- Signposting families to other sources of support
- Awareness of family circumstances
- A clear positive welcome to new Armed Forces families

**Examples from practice:**

**"Close liaison with parents means we know when separation/deployment is likely and can support, if required."**

(Teacher, primary school)

**"We have done a lot of work with families when dad comes home; we have sit down meetings with the parents to think about how it will work when one person re-enters the family home."**

(Teacher, primary school)

**"Parent liaison support is offered including coffee mornings."**

(Senior leader, SEN school)

Emerging practice	Developing practice	Embedding practice
Schools with emerging practice will be actively reflecting on their activity and may be implementing actions to enhance their support, but to a small extent	Schools with developing practice will be addressing this principle to a good extent, but this may be partial or yet to be enhanced through regular monitoring and evaluation	Schools with embedding practice will fully address this principle with well-established work that is routinely monitored and evaluated and showing evidence of impact

REFLECT	EVIDENCE	SELF-ASSESSMENT			ACTION	DATE
Reflect with stakeholders on these key questions	Identify current practice that demonstrates where you are now	Assess your current practice			Identify actions to enhance your support	Agree a deadline for your actions
		Emerging	Developing	Embedding		
<p><b>6.1</b> - To what extent do you provide support to Armed Forces families?</p>						dd/mm/yy
<p><b>6.2</b> - To what extent do you help Armed Forces families build strong relationships with each other and with the school community?</p>						
<p><b>6.3</b> - To what extent do you liaise with parents and if appropriate local Armed Forces personnel about deployment and mobility?</p>						

REFLECT	EVIDENCE	SELF-ASSESSMENT			ACTION	DATE
Reflect with stakeholders on these key questions	Identify current practice that demonstrates where you are now	Assess your current practice			Identify actions to enhance your support	Agree a deadline for your actions
		Emerging	Developing	Embedding		
<p><b>6.4</b> - To what extent are deployments, separation or impending moves shared with all staff appropriately?</p>						dd/mm/yy
<p><b>6.5</b> - To what extent do you support Service children to communicate with a parent when they are away?</p>						

**Evidence suggests:**

- Whole school understanding of the context for Service children is a priority
- Supportive and well-informed teachers can be protective factors in situations such as deployment
- Service children's experiences can be diverse
- There are 5 key questions for schools to consider

**What this might look like:****Research identified that practice supporting this principle may include:**

- Designated senior member of staff responsible for ensuring regular training and dissemination of information for example on upcoming moves and deployments
- Training run by specialist pastoral support staff or by outside experts
- Supporting staff attendance at local or national conferences
- Membership of local networks and attendance at meetings and events to keep up to date
- Drawing on the knowledge of teaching and support staff from an Armed Forces background
- Arranging training on an issue of relevance to all children but of particular concern for Service children such as separation
- Provision of simple evidence based introductory resources for all staff to be able to understand and to open up conversation with Service children
- Working with other schools to create networks and share ideas
- Reaching out to nearby university outreach teams

**Examples from practice:**

**"A member of the SLT is responsible for ensuring staff are aware of the needs of Service children across the school. The head teacher and the member of the SLT as a whole read the latest research and ensure information is disseminated."**

(Teacher, primary school)

**"Pastoral support worker is an RAF wife and grew up as a child of RAF officer."**

(Senior leader, primary school)

**"We have a number of TAs who have experience with the Forces. These people understand both military and teaching."**

(Teacher, primary school)

**Emerging practice**

Schools with emerging practice will be actively reflecting on their activity and may be implementing actions to enhance their support, but to a small extent

**Developing practice**

Schools with developing practice will be addressing this principle to a good extent, but this may be partial or yet to be enhanced through regular monitoring and evaluation

**Embedding practice**

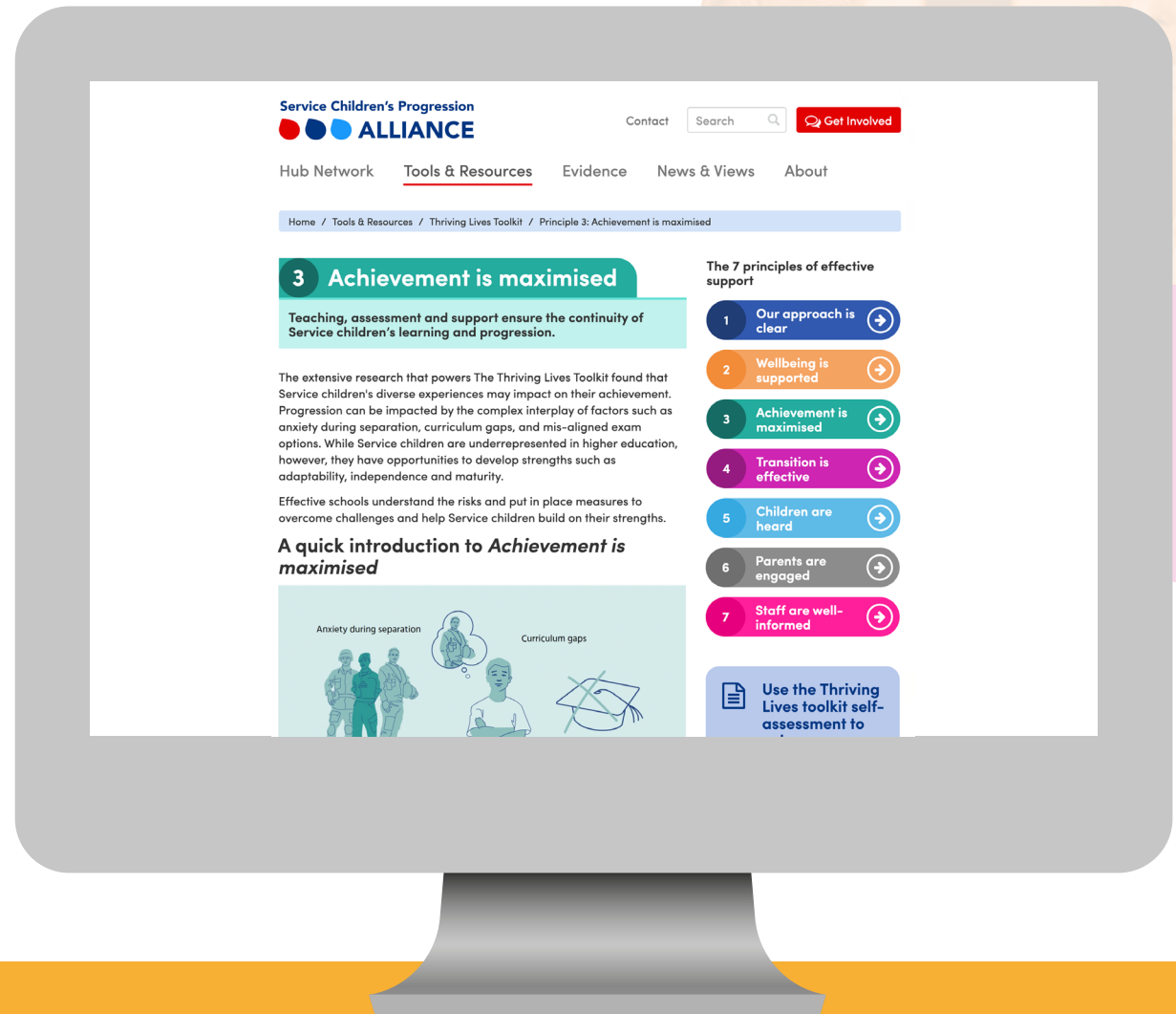
Schools with embedding practice will fully address this principle with well-established work that is routinely monitored and evaluated and showing evidence of impact

REFLECT	EVIDENCE	SELF-ASSESSMENT			ACTION	DATE
Reflect with stakeholders on these key questions	Identify current practice that demonstrates where you are now	Assess your current practice			Identify actions to enhance your support	Agree a deadline for your actions
		Emerging	Developing	Embedding		dd/mm/yy
<p><b>7.1</b> - To what extent do you have a named point of contact to help staff support Service children and families?</p>						
<p><b>7.2</b> - To what extent do you provide appropriate time for professional development around Service children?</p>						
<p><b>7.3</b> - To what extent do you ensure that all staff and governing body members access high quality training about supporting Service children?</p>						

REFLECT	EVIDENCE	SELF-ASSESSMENT			ACTION	DATE
Reflect with stakeholders on these key questions	Identify current practice that demonstrates where you are now	Assess your current practice			Identify actions to enhance your support	Agree a deadline for your actions
		Emerging	Developing	Embedding		dd/mm/yy
<p>7.4 - To what extent do staff apply research and evidence-based resources in their support for Service children and families?</p>						
<p>7.5 - To what extent do staff engage in local and national networks focused on supporting Service children and families?</p>						

# THE THRIVING LIVES TRAINING MODULES

Schools piloting the framework told us that they needed further guidance. The SCiP Alliance has worked with partners across the UK to produce a 3-tier training resource. Once you have considered the self-reflection questions, please have a look at our website where you will find an animation introducing the Toolkit. For each of the seven principles we have developed an introductory animation, a more detailed training module going into greater depth on the evidence, what schools can do and who can help, and a set of school case studies.



<https://www.scipalliance.org/thriving-lives-toolkit>





# EVALUATION

Please note your thoughts here when prompted during the conference so that you finish this training with a record of your reflections and a plan to act on back in school.



	SERVICE CHILDREN'S LIVES	THE TOOLKIT	WHO CAN HELP?	WORKSHOPS
IDEAS & INSIGHTS				
ACTIONS				
MY MAIN MESSAGE				

# CONFERENCE EVALUATION

We hope you enjoy these sessions and would be grateful for your feedback to guide our decisions about future events. We will be monitoring feedback throughout the round of conferences and tweaking future conferences. The evaluation report from this programme will inform future provision so please do help us to help you.

Please find the time to provide your feedback here:

<https://winchester.onlinesurveys.ac.uk/scip-alliance-thriving-lives-toolkit-conference-evaluation>



Today's conference is brought to you by the SCiP Alliance Yorkshire and North East Hub which is led by FutureHy. The training has been funded through the SCiP Alliance by the MoD Education Support Fund, which is administered by DCYP on behalf of the MOD. Additional funding was provided by a collaboration of six Uni Connect partnerships who funded the Thriving Lives Toolkit.



Ministry of Defence



# ACRONYMS QUIZ



WHAT DO THESE MEAN IN THE ARMED FORCES COMMUNITY?

- 1 ABF
- 2 AFC
- 3 AFET
- 4 AFF
- 5 AWS
- 6 BFBS
- 7 BFPO
- 8 CDO
- 9 CDW
- 10 CEAS
- 11 CO
- 12 DCYP
- 13 EPS
- 14 ESF
- 15 HCDC
- 16 I/C
- 17 INTOUCH
- 18 MKC HEROES
- 19 MCI
- 20 MODLAP

# ACRONYMS QUIZ (CONTINUED)



WHAT DO THESE MEAN IN THE ARMED FORCES COMMUNITY?

21 NCO

22 NFF

23 POSM

24 PO(T)L

25 R & R

26 RAFA

27 RAFFF

28 RIAISEN

29 RBL

30 RCET

31 SAC

32 SBS

33 SCAN

34 SCIP ALLIANCE

35 SCISS

36 SPP

37 SSAFA

38 SSCE CYMRU

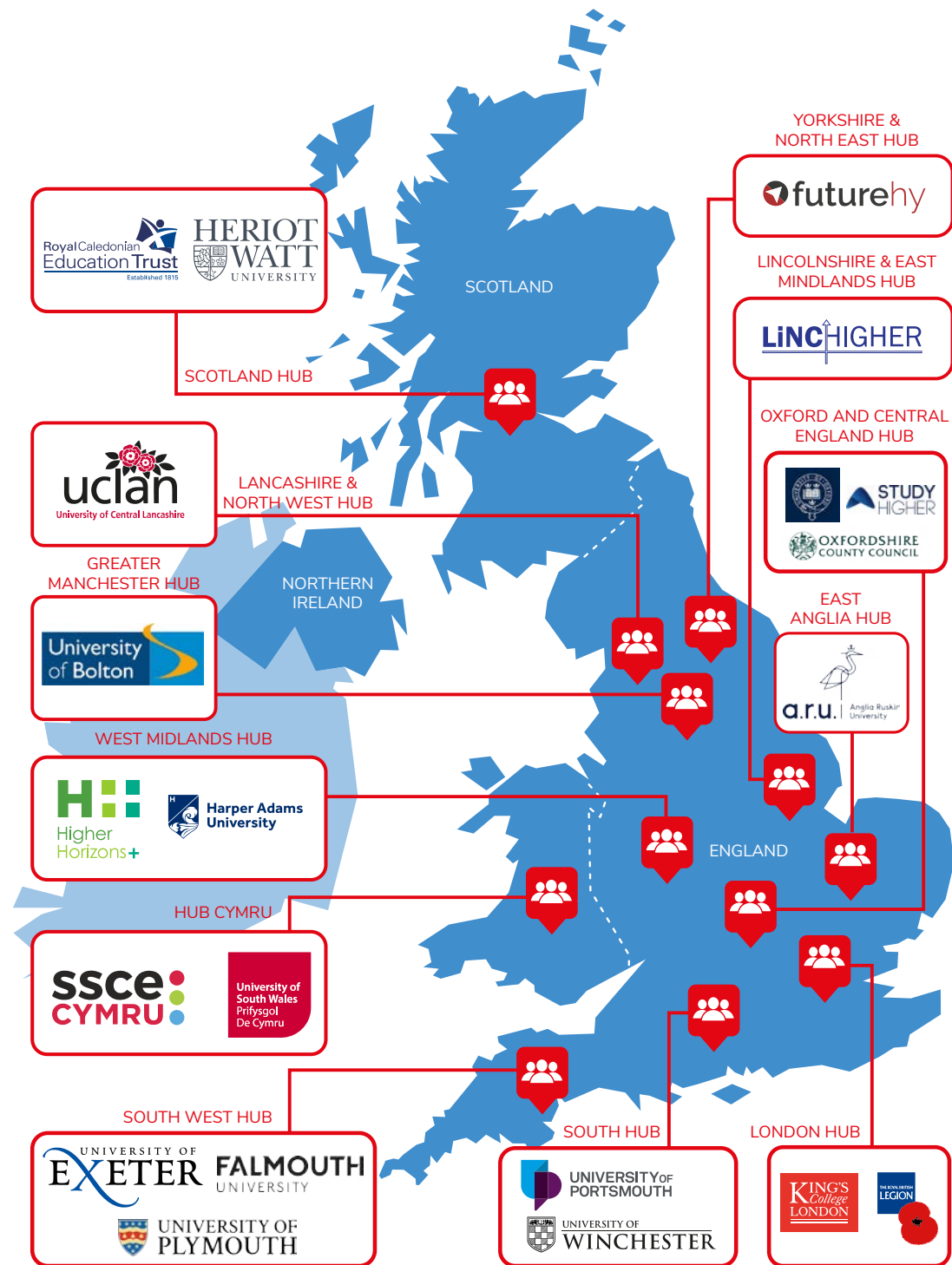
39 TCK

40 UWO

# HUB NETWORK

The SCiP Alliance is led by the University of Winchester, supported by the MoD and made possible by its members through a network of Hubs.

**Service Children's Progression**  
**ALLIANCE**



**T**hank you for coming to this SCiP Alliance Hub network event. Please do get in touch if you would like to know more about the Alliance. We would love to know how you found the Toolkit useful and what actions you have taken as a result of today – please do let us know:

**[www.scipalliance.org](http://www.scipalliance.org)**

**[info@scipalliance.org](mailto:info@scipalliance.org)**

**Twitter [@scipalliance](https://twitter.com/scipalliance)**

Local SCiP Alliance Hub:

**[info@studyhigher.ac.uk](mailto:info@studyhigher.ac.uk)**

These events are run in accordance with the SCiP Alliance online events privacy notice.

**<https://www.scipalliance.org/about/data-protection-and-gdpr>**

#### WITH THANKS TO:

- **Study Higher**
- **Aspire Higher**
- **Katherine Lawrence, SCiP Alliance Head of Operations**
- **Philip Dent, Head of Community Engagement, Social Justice and Impact, University of Winchester**
- **Andy Heyes, Interim School Improvement Officer, Oxfordshire County Council**
- **Kim James- Head of Services, Oxfordshire County Council, Learning and School Improvement**
- **SCiP Alliance Oxfordshire and Central England Hub**
- **Jodie Evans, Graduate Ambassador at Oxford Brookes University**
- **Ed Harris, MOD AFFS**
- **Steph Fawdry - Head Teacher at RAF Benson Community Primary School**

Every effort has been made to ensure the accuracy of the information contained in this booklet but the SCiP Alliance, the University of Winchester and partners can accept no responsibility for errors or omissions.